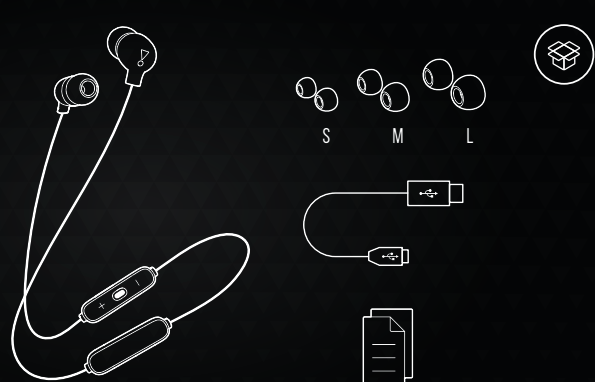


QUICK START GUIDE

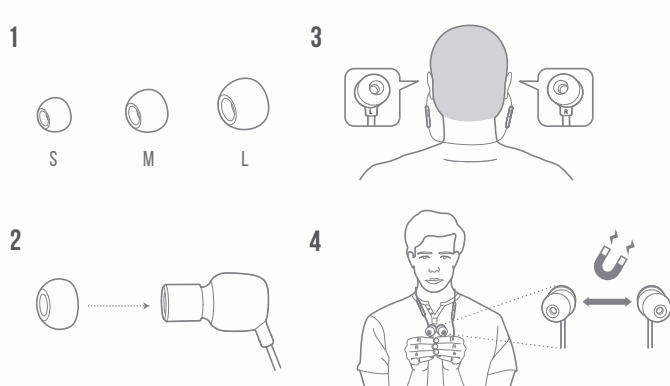
TUNE115 BT



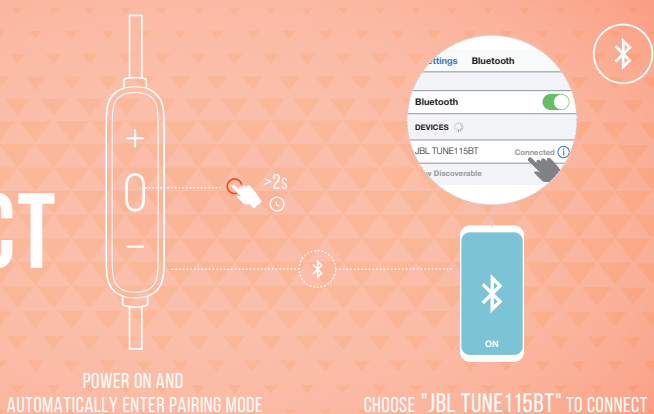
WHAT'S IN THE BOX



HOW TO WEAR



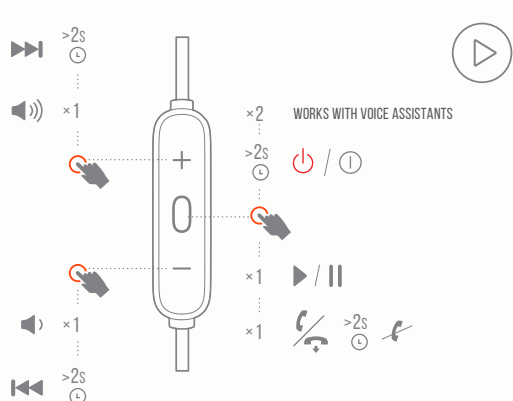
POWER ON & CONNECT



POWER ON AND AUTOMATICALLY ENTER PAIRING MODE

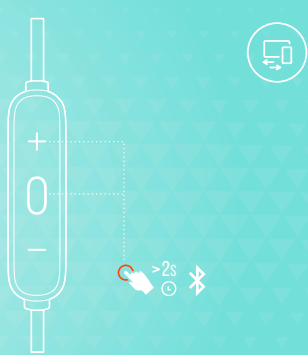
CHOOSE "JBL TUNE115BT" TO CONNECT

BUTTON COMMAND



WORKS WITH VOICE ASSISTANTS

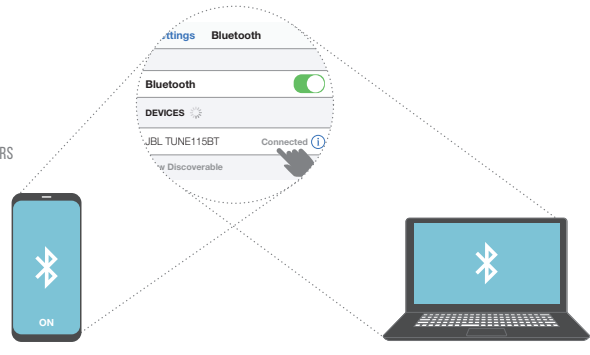
MULTI-POINT CONNECTION



* (MAXIMUM 2 DEVICES)

ENTER PAIRING MODE WITH THE 2ND DEVICE

- 1 TO SWITCH MUSIC SOURCE, PAUSE THE MUSIC ON THE CURRENT DEVICE AND SELECT PLAY ON THE 2ND DEVICE.
- 2 PHONE CALL WILL ALWAYS TAKE PRIORITY.
- 3 IF ONE DEVICE GOES OUT OF BLUETOOTH RANGE OR POWERS OFF, YOU MAY NEED TO MANUALLY RECONNECT THE REMAINING DEVICE.
- 4 SELECT "FORGET THIS DEVICE" ON YOUR BLUETOOTH DEVICES TO DISCONNECT MULTI-POINT.

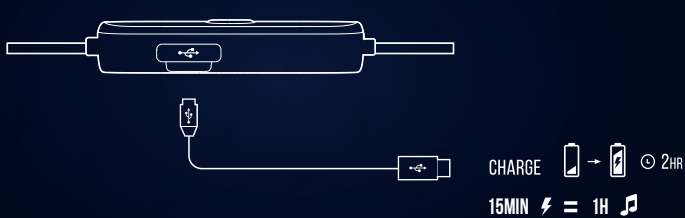


1ST BLUETOOTH DEVICE

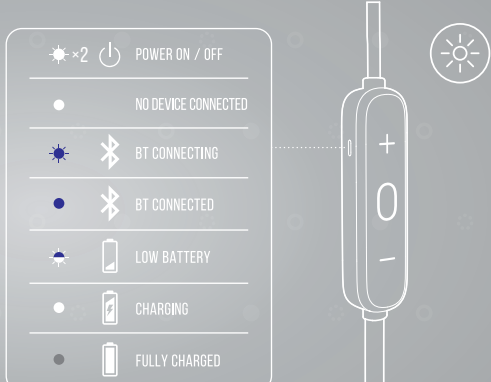
CHOOSE "JBL TUNE115BT" TO CONNECT

2ND BLUETOOTH DEVICE

CHARGING



LED BEHAVIORS



TECH SPEC

DRIVER SIZE:	8.6 mm dynamic driver
FREQUENCY RESPONSE:	20 Hz – 20 kHz
SENSITIVITY:	102 dB SPL @ 1kHz 1mW
MICROPHONE SENSITIVITY:	-25 dBV/Pa @ 1kHz
IMPEDANCE:	16 ohm
BLUETOOTH TRANSMITTED POWER:	<5 dBm
BLUETOOTH TRANSMITTED MODULATION:	GFSK/DOPSK/8DPSK
BLUETOOTH FREQUENCY:	2.402 GHz - 2.480 GHz
BLUETOOTH PROFILE VERSION:	HFP V1.6, HSP V1.2, AVRCP V1.5, A2DP V1.2
BLUETOOTH VERSION:	4.2
HEADSET BATTERY TYPE:	LITHIUM-ION BATTERY (3.7 V/160 mAh)
POWER SUPPLY:	5 V === 1 A
CHARGING TIME:	<2 hrs
MUSIC PLAYTIME WITH BT ON:	8 hrs
WEIGHT:	19.02 g

